

# MONTHLY MEMBERSHIP PROGRESS REPORT

LOCATION INDIA

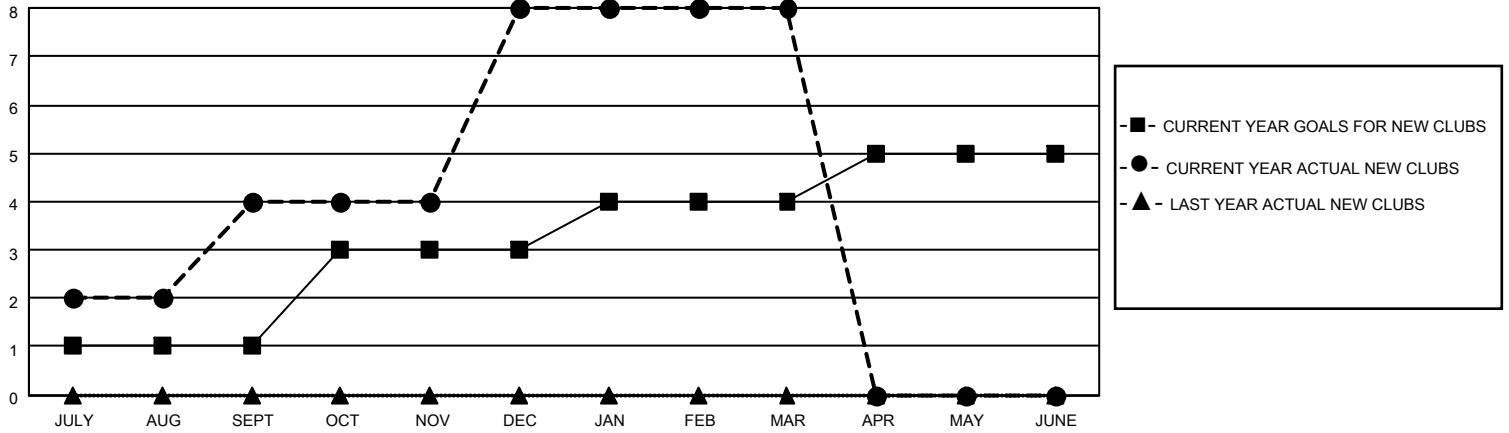
District 320 B

Results as of: 3/31/2021

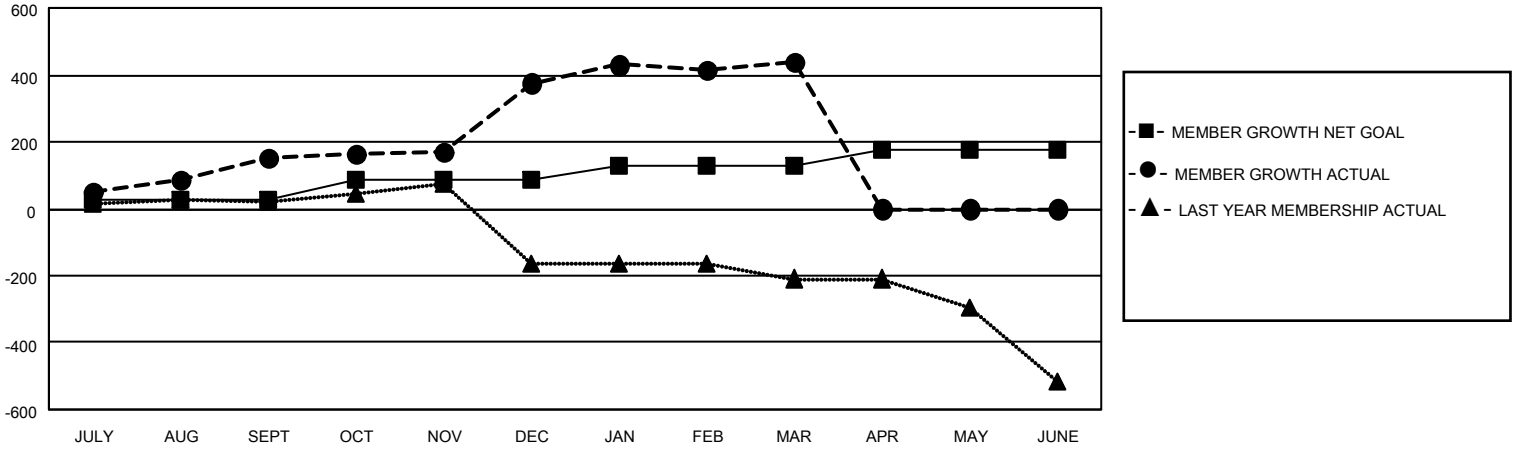
Clubs			
RESULTS FOR 2020-2021			
QUARTER	NEW CLUB GOAL	NEW CLUBS	DROPPED CLUBS
JULY/AUG/SEPT	1	4	1
OCT/NOV/DEC	2	4	0
JAN/FEB/MAR	1	0	4
APR/MAY/JUNE	1	0	0

Members			
RESULTS FOR 2020-2021			
QUARTER	MEMBER GROWTH NET GOAL	MEMBER GROWTH ACTUAL	DROPPED MEMBERS ACTUAL (including transfers)
JULY/AUG/SEPT	29	222	47
OCT/NOV/DEC	55	303	33
JAN/FEB/MAR	45	129	66
APR/MAY/JUNE	45	0	0

**GOALS AND ACTUAL NEW CLUBS CUMULATIVE**



**GOALS AND ACTUAL MEMBERS CUMULATIVE**



**DROPPED CLUBS: 5**

42 CLUBS OF 69 ADDED 1 OR MORE NEW MEMBERS

**GENDER DISTRIBUTION**

MALE 1,409 (61.26%)  
 FEMALE 891 (38.74%)

**DROPPED MEMBERS**

[CLICK HERE FOR CUMULATIVE MEMBERSHIP DATA](#)

DECEASED	5
CLUB CANCELLED	63
OTHER	78
<b>TOTAL</b>	<b>146</b>

TOTAL FAMILY UNIT MEMBERS	1,479
FAMILY MEMBERS PAYING HALF DUES	806